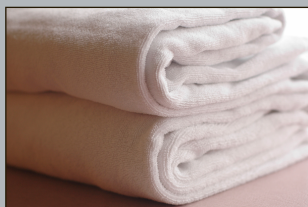


Technical Data Sheet



Low Suds Laundry

High Performance Laundry Detergent with Enzymes

ControlPaks Low Suds Laundry Detergent provides outstanding results on all types of fabric. Contains an advanced blend of builders, alkalis, antiredeposition agents and optical brighteners for optimum results in all water conditions and soil loads. Ideal for use in most residential, institutional and light industrial laundry applications. Fortified with enzymes for improved stain, soil and odor removal. Low sudsing. Fresh lemon fragrance.

Directions for Use

This product is intended for use in top or front load household-type laundry machines, including high efficiency machines. Use one water-soluble packet (1.2 oz.) per standard wash load (up to 15 lbs). Use two packets where heavy soils or very hard water are encountered. Add to wash water at first stage and run machine 10-15 minutes. For best results, pretreat stains with a quality stain remover. Follow manufacturer's label directions for water temperature and wash cycle.

This product may be used as a presoak for stained fabrics. To prepare a presoak solution, dilute 1-2 packets per gallon of warm water. Soak for 15 minutes or longer, overnight if possible, then wash as usual.

Safety Reminder

Consult product label and Safety Data Sheet (SDS) before use. SDS's can be downloaded from www.crown-chem.com.



Technical Specifications

Appearance	White Powder
Odor	Lemon
pH (1% solution, 22°C)	<9.0
Foaming	Low
Flash Point	N/A
Bulk Density (lbs/gal)	8.00 ±0.1
Stability Range	N/A
Free Alkalinity (as Na ₂ O)	Moderate
Solubility (in H ₂ O, 22°C)	100%
Phosphate Content	<6.0%

Product Number

CP02/25012

*Water soluble packets

Packaging

250x1.2 oz. pail*



4701 W. 136th Street • Crestwood, IL 60445
tel (708) 371-6990 • (800) 672-4065
fax (708) 371-6992
www.crown-chem.com

